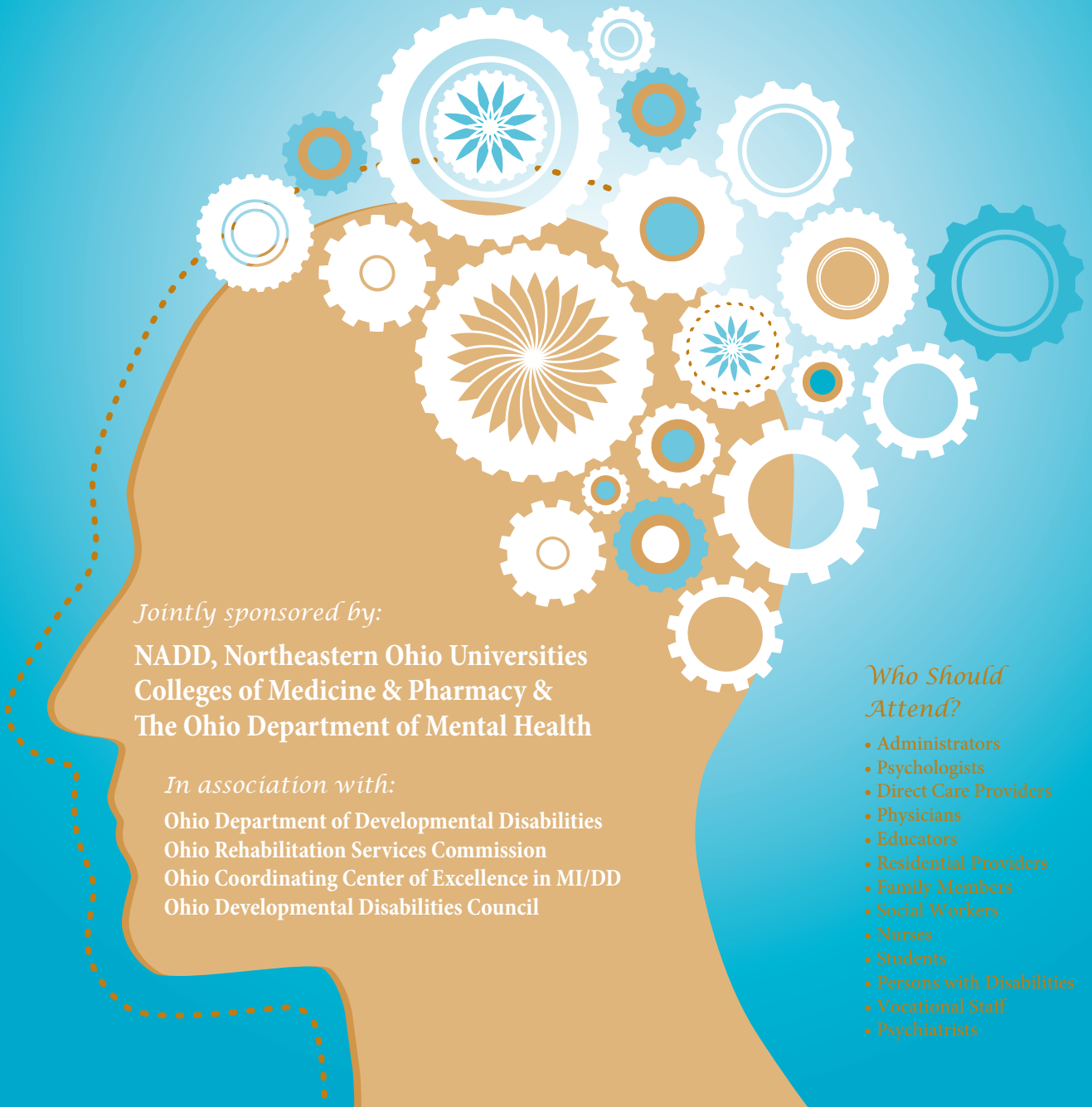


Mental Health Aspects: Treatment & Support

September 28 & 29, 2010

DoubleTree Hotel, Columbus/Worthington, OH



Jointly sponsored by:

NADD, Northeastern Ohio Universities
Colleges of Medicine & Pharmacy &
The Ohio Department of Mental Health

In association with:

Ohio Department of Developmental Disabilities
Ohio Rehabilitation Services Commission
Ohio Coordinating Center of Excellence in MI/DD
Ohio Developmental Disabilities Council

Who Should Attend?

- Administrators
- Psychologists
- Direct Care Providers
- Physicians
- Educators
- Residential Providers
- Family Members
- Social Workers
- Nurses
- Students
- Persons with Disabilities
- Vocational Staff
- Psychiatrists

OHIO CONFERENCE REGISTRATION

3 Easy Ways to Register: 1) Online at www.thenadd.org 2) Mail 3) Fax

Registration by mail, fax (845) 331-4569, or online will be accepted until **September 20, 2010**. We urge people to pre-register online with debit or credit cards. Faxed registration forms must have credit card information to be processed. Please DO NOT fax and then mail the same registration form. There will be onsite registration, based on space availability. **All checks sent as payment must have registrant's names associated with them.**

Name: _____

Organization/Agency: _____

Address: _____

City: _____ State/Province: _____ Zip: _____

Phone: _____ Fax: _____

E-Mail: _____

Please check one presentation in each concurrent workshop. (Registrations will not be processed without this information.)

Tuesday, September 28, 2010

Concurrent Session I: 1 2 3
 Concurrent Session II: 4 5 6
 Concurrent Session III: 7 8 9

Wednesday, September 29, 2010

Concurrent Session I: 1 2 3 4
 Concurrent Session II: 5 6 7 8

CONTINUING EDUCATION CREDITS (Please check the appropriate box for type of credit desired):

Psychology Counselor Social Work RN/LPN MD/DO

CEU Information: If you are applying for the above Continuing Education Credits, please supply the following information (Note: without this information you will not be eligible for CE credit.):

Discipline _____ SS# or License Number _____

Please check if you will need credit/professional development hours through DODD Dept.

Join NADD and Save on NADD membership through Dec. 31, 2011, as well as conference registration.

NADD Membership Fees: I want to become a NADD Member.

Individual Membership \$125 Family/Consumer/Student \$60 Organizational \$600/\$800

Individual: \$125.00 - Includes receiving the NADD Bulletin published six times per year and NADD Research Journal, discounts on NADD educational products, discounts on NADD conferences and one vote for election of the Board of Directors.

Family/Consumer/Student Membership: \$95.00 - This membership option is for a family member of a consumer, an individual who is a consumer of services, or a full time student. It includes the same benefits as individual membership.

Organizational - Organizational membership fee is either **\$600.00** or **\$800.00** depending on the size of the agency's total budget.

Organizational membership dues for agencies with budgets from zero up to three million dollars is \$600.00. It includes the NADD Bulletin, published six times a year, discounts for all staff of the agency for NADD conferences, and one vote for election of the NADD Board of Directors.

Organizational membership dues for agencies with budgets over three million dollars is \$800.00. It includes the NADD Bulletin and all the benefits as reflected in the previously mentioned organizational fee structure.

CANCELLATION POLICY: cancellations must be made in writing to the NADD office no later than September 2, 2010, in order to refund your registration minus a \$25.00 administrative fee. Registrants who do not attend are liable for the registration fee. NADD has the right to cancel any of these trainings, and will make a full refund of the registration fee.

VOLUNTEER OPPORTUNITIES:

Volunteers are needed to assist at the registration desk and NADD product booth, each day of the conference. An individual who volunteers for the day (from 7:30 a.m. – 5:00 p.m., with a lunch break) can attend another day with the registration fee waived. There may be opportunities to attend some sessions the day you are volunteering, if scheduling permits. If you are interested in volunteering, please contact Ichristie@thenadd.org or call (800) 331-5362 by **August 20, 2010**. Note: Volunteers are placed where needed.

Join NADD today!

Four great reasons to join:

1. Save on all NADD products
2. Save on Conference registrations
3. Receive NADD member benefits
4. Networking Opportunities

Enjoy these great members-only benefits:

- NADD Bulletin subscription
- NADD Research Journal
- NADD Conference and training discounts
- NADD Training and Educational Product discounts
- e-Newsletter

(See conference registration form for membership information)

	<u>One Day</u>	<u>Two Day</u>
<input type="checkbox"/> NADD Member Member # _____	\$125.00	\$200.00
<input type="checkbox"/> Co-Sponsoring Agency Staff Agency name _____	\$140.00	\$210.00
<input type="checkbox"/> Five or More From Same Agency Agency name _____	\$150.00	\$220.00
<input type="checkbox"/> Non-Member	\$170.00	\$245.00
<input type="checkbox"/> Student or Family Member (students must provide copy of ID)	\$95.00	\$155.00

My check is enclosed

(payable to NADD, 132 Fair Street, Kingston, NY 12401-4802)

Charge my credit card, please

Discover VISA MasterCard

Card No. _____

Exp. Date _____

Signature _____

Conference Total \$ _____

Membership Total \$ _____

GRAND TOTAL \$ _____

DAY ONE – SEPTEMBER 28, 2010

8:00 - 9:00 a.m.

REGISTRATION

9:00 - 9:30 a.m.

WELCOME

Robert Fletcher, DSW, ACSW, NADD Founder and CEO; **Sandy Stephenson**, Director of Ohio Department of Mental Health (ODMH); **John L. Martin**, Director of Ohio Department of Developmental Disabilities (DODD)

9:30 - 10:30 a.m.

KEYNOTE ADDRESS

Mood Disorders and Intellectual Disabilities: How the DM-ID Can Help Improve Diagnostic Assessment

The *DM-ID (Diagnostic Manual for Individuals with Intellectual Disabilities)* is a companion guide to the *DSM-IV-TR*, developed in a collaborative effort between the NADD and the APA. This session will review the *DM-ID* Mood Disorders chapter and diagnostic criteria for people with ID. Behavioral descriptions of what people with ID might display or say when experiencing various mood and anxiety symptoms will be discussed in detail. The *DM-ID* Mood Disorders chapter includes some discussion of possible "developmental effects" on the phenomenology of mood disorders in people with ID. These will be described as well as common sources of physical and psychosocial stress that may mimic or exacerbate mood disorders. Case illustrations will be used to highlight diagnostic challenges that may be helped through use of the *DM-ID*.

Lauren Charlot, PhD, University of Massachusetts Memorial Health Center, Worcester, MA

10:30 - 10:45 a.m.

BREAK

10:45 - 12:15 p.m.

CONCURRENT SESSIONS I

SESSION 1: High Expectations:

Developmental Disability Training for Healthcare Providers

This session will discuss the developmental disability training needs of healthcare providers and present training modules that address this need. Essential training elements include information about developmental disabilities and associated secondary conditions, common attitudes, stereotypes, and assumptions that negatively impact patient-provider relationships, and other issues for providing quality healthcare to people with disabilities.

Susan M. Haverkamp, PhD, Nisonger Center - UCEDD, Ohio State University, Columbus, OH

SESSION 2:

Social Relationships, Dating and Sex: A Full Perspective from Different Eyes

This panel will provide a perspective from different viewpoints regarding the comfort level and values of a person with an intellectual disability having an intelligent conversation and healthy relationship with someone about sexuality. We will discuss natural friendships and relationships that are real and not fantasy with emphasis on their ability to recognize the difference. Does everyone have an opinion?

Peggy Martin, Ohio Department of Developmental Disabilities (DODD), Columbus, OH; **Barbara Thomas, MEd, CSE, JSOC**, TECS Education Center, TALL Institute, Cincinnati, OH; **Brent Baer**, Northwest Ohio Developmental Center, Toledo, OH

SESSION 3:

Ohio Pediatric/Psychiatry Decision Support Network

The Ohio Pediatric/Psychiatry Decision Support Network is a technologically supported system of consultation, communication, quality improvement, and direct services designed to increase access to child psychiatry consultation and triage for person-centered medical homes, primary care, and community mental health provider organizations.

Marion Sherman, MD, MBA; Michael Schroeder, MSW, Ohio Department of Mental Health (ODMH), Columbus, OH

12:15 - 1:45 p.m.

LUNCH (Attendants On Own)

1:45 - 3:15 p.m.

CONCURRENT SESSIONS II

SESSION 4:

Education: Is A Necessity NOT A Luxury...And Let US Be The 1st To Tell You Why!!

Laws have been passed that state all individuals have a right to an education. Our education stops at age 22... when real-life situations begin! Facing real-life adult challenges without the education we need is just not okay with us! Ideas for what we believe we should still be taught...and how to access that education... will be the topic of our session.

Barbara Thomas, MEd, CSE, JSOC, TECS Education Center, TALL Institute, Cincinnati, OH

SESSION 5:

What Works: Dual Diagnosis Team Guiding Principles and Innovations

This presentation briefly reviews the history and structure of the Ohio Coordinating Center of Excellence (CCOE) in MI/DD, and discusses the CCOE's suggested guiding principles for successful collaborations and examples of different forms of teams and collaborations. Several teams will be presented as examples of innovations in collaboration and planning.

Lara Palay MSW, LISW-S, Ohio CCOE in MI/DD, DODD/ODMH Columbus, OH

SESSION 6:

Assessment of Psychiatric Disorders in People with Autism Spectrum Disorders

Making an accurate diagnosis of a psychiatric disorder in a patient with an Autism Spectrum Disorders (ASDs) can be challenging. Several key questions will be addressed. What are the most frequently reported psychiatric disorders in children and adults with an ASD? Do people with ASDs display atypical features of psychiatric disorders? When should we diagnose a repetitive behavior as a compulsion, The ways in which an understanding of the core features of ASDs may help clinicians more accurately identify psychiatric co-morbidities will be emphasized and several case examples will be presented. Attendees will be asked to participate in a discussion of the case examples.

Lauren Charlot, PhD, University of Massachusetts Memorial Health Center, Worcester, MA

3:15 - 3:30 p.m.

BREAK

3:30 - 5:00 p.m.

CONCURRENT SESSIONS III

SESSION 7:

Barrier Free Justice: A Collaborative Program Serving Victims of Interpersonal Violence with Intellectual and Developmental Disabilities

People with disabilities experience a high rate of abuse but are less likely to receive services. Barrier Free Justice (BFJ) was created to address this issue by linking the criminal justice system to supportive and therapeutic services. This presentation will discuss how BFJ has been effective in treating individuals with ID/DD who experience domestic violence and/or sexual assault and PTSD.

Sara Vehling, LMSW, Kings County District Attorney Victims Services Unit, Brooklyn, NY; **Katie Webb, LMSW**, Barrier Free Justice, Barrier Free Living/ Family Justice Center, Brooklyn, NY

SESSION 8:

Implementing a Strategic Therapeutic Assessment Respite Treatment (START) Model

The START Model facilitates a coordinated service approach by providing consultation, education, and individualized treatment planning. The services include crisis planning and prevention, psychiatric services, individual & family therapy, service linkages, and both planned and emergency respite services. This presentation presents how to implement and manage this systemic treatment model.

Scott Rasmus, LPCC, IMFT, START Butler County Mental Health Board, Fairfield, OH; **Dennis Burger MEd**, Ohio Department Developmental Disabilities (DODD), Butler Co Board of DD, Hamilton, OH

SESSION 9:

Grief and Loss Issues in the Patient with ID: Psychotherapy and Pharmacotherapy

Presenter will discuss the stages of grief and loss and how these are processed in individuals with intellectual disabilities; several medication categories will also be reviewed, including best practices and evidence-based medicine guidelines. Videotaped clips of individual sessions and group therapy will be utilized as clinical vignettes to illustrate specific interventions and techniques.

Julie P. Gentile, MD, Ohio CCOE in MI/DD, Wright State University, Dayton, OH

Note: There will be a 10-minute Q&A session at the end of each session.

5:00 - 5:15 p.m. Day 1 Concludes

PASS IN CONFERENCE EVALUATIONS

DAY TWO – SEPTEMBER 29, 2010

8:00 - 9:00 a.m.

REGISTRATION

9:00 - 9:30 a.m.

WELCOME / AWARD

Robert J. Fletcher, DSW, ACSW & Ohio Coordinating Center of Excellence Recognition Awards presented by **Lara Palay**, Ohio CCOE in MI/DD and DODD/ ODMH

9:30 - 10:30 a.m.

KEYNOTE ADDRESS

Shifting Our Focus from Deficits Assessment to Understanding a Person's Support Needs

The Keynote presentation will review and discuss the shift in definition of intellectual disability away from a focus on deficit-based functioning towards a greater emphasis on the person's needs for supports. We will discuss the introduction of the Supports Intensity Scale and its relevance as an important outcome measure.

Marc J. Tassé, PhD, FAAIDD, Nisonger Center – UCEDD, Ohio State University, Columbus, OH

10:30 - 10:45 a.m.

BREAK

10:45 - 12:15 a.m.

CONCURRENT SESSIONS I

SESSION 1:

The Diagnostic Manual - Intellectual Disability (DM-ID): Overview and Clinical Applications

The first part of the presentation will begin with the purpose, special features, and structure of the *DM-ID*. The modifications of diagnostic criteria will be discussed. Results from a field trial research which included 845 participants will be presented. The second part of the presentation will focus around clinical case studies in which the *DM-ID* was used to arrive at a psychiatric diagnosis with persons with ID. The later part will focus on the clinician's experience with the *DM-ID* in assessing individuals with a dual diagnosis. Case examples will be utilized to demonstrate the effectiveness of the *DM-ID*.

Robert Fletcher, DSW, ACSW, NADD Founder and CEO, Glenn McCleese, LISW, House of New Hope, St. Louisville, OH

SESSION 2:

Reducing the Use of Physical Interventions Through Skill Building

The Ohio Department of Developmental Disabilities aims to minimize the use of physical interventions. This presentation will share the story of how behavior support interventions based on a functional analysis eliminated the daily use of restraint for a young woman with Autism Spectrum Disorder and Intellectual Disabilities and at the same time significantly increased her independence in daily living skills.

Jennifer Gallaway; Kelly Barnett MSW, LISW-S, Nisonger Center - UCEDD, Ohio State University, Columbus, OH; Therese Brady, BFA, FCBMRDD, Columbus, OH; Carolyn Johnston, Cori Care, Columbus, OH

SESSION 3:

Update on Autism Treatment Research

This presentation describes recently published and pre-publication findings from psychopharmacological and related treatment research in Autism Spectrum Disorders. Ongoing studies with the hypotheses being tested are also described. Included are treatments for associated hyperactivity, associated aggression/irritability and self-injury, "alternative" treatments, "negative findings," and attempts to treat core symptoms of Autism. Research findings and exceptions to them will be illustrated by clinical experience.

L. Eugene Arnold, MD, MEd, Nisonger Center - UCEDD, Ohio State University, Columbus, OH

Session 4:

Autistic Spectrum Disorder: Techniques That Create Independence and Improve Quality of Life - PART 1 OF 2

Theories about autism are important to understand... but what should be done with the hitting, screaming, disruption, etc. that is happening now? This workshop focuses on actions that can be taken immediately to change disruptive behaviors and create adaptive ones by providing a variety of composite examples representing individuals with autism engaging in disruptive behaviors and how specific techniques can reduce those incidents and slowly adapt them into functional behaviors. Attendees are encouraged to share issues and allow the group to brainstorm possible solutions.

Larry Lipsitz, MEd, The Arc of Washington County, Inc., Hagerstown, MD

12:15 p.m. - 1:45 p.m.

LUNCH (Attendants On Own)

1:45 - 3:15 p.m.

CONCURRENT SESSIONS II

Session 5:

Psychiatric Illness in Persons with Intellectual Disabilities: Which Ones, How Much, and How Do We Know?

Individuals with ID are susceptible to the entire range of mental illnesses. Prevalence depends on age, gender, etiology, and severity of ID, and on diagnostic strategy employed. Prevalence reports include population studies, institutional or community-based samples referred for psychiatric evaluation, reviews of specific psychiatric disorders, or reviews of co-morbidity with specific ID etiologies (behavioral phenotypes).

Stephen Ruedrich, MD, Case Western Reserve University, School of Medicine, Cleveland, OH

Session 6:

Exploring the Mental Health of Individuals with Down Syndrome

The current session will address how the behavioral phenotype of Down syndrome relates to their mental health. Etiology and diagnostic features of Down syndrome will be briefly reviewed. How physical health conditions contribute to mental health symptomatology and implications for intervention will also be reviewed.

Anna J. Esbensen, PhD, Cincinnati Children's Hospital Medical Center, Cincinnati, OH

Session 7:

The Impact of Intensity of Support Needs on Level and Cost of Care

This 90-minute presentation will review and discuss research data examining the influence and contribution of intensity and pattern of support needs across clinic populations. We will compare and contrast individuals with an individual disability with persons with a co-occurring psychiatric disorder, severe problem behavior, and Autism Spectrum Disorders. This presentation will discuss the impact of the intensity of a person's support needs on their need for services and costs associated with their support needs.

Marc J. Tassé, PhD, FAAIDD, Nisonger Center - UCEDD, Ohio State University, Columbus, OH

Session 8:

Autistic Spectrum Disorder: Techniques That Create Independence and Improve Quality of Life – PART 2 of 2

Please see description Session 4

Larry Lipsitz, MEd, The Arc of Washington County, Inc., Hagerstown, MD

Note: There will be a 10-minute Q&A session at the end of each session.

3:15 - 4:00 p.m. Day 2 concludes

PASS IN OVERALL CONFERENCE EVALUATIONS

Pick-up appropriate CE certificates (if applicable).

Continuing Education

This activity has been planned and implemented in accordance with the Essential Areas and Policies of the Accreditation Council for Continuing Medical Education (ACCME) and/or the Accreditation Council for Pharmacy Education (ACPE); through the joint sponsorship of Northeastern Ohio Universities Colleges of Medicine and Pharmacy and the Ohio Department of Mental Health and the NADD Association. Northeastern Ohio Universities Colleges of Medicine and Pharmacy is accredited by the ACCME and the ACPE to provide continuing education for physicians and pharmacists.

Conference Etiquette

It is difficult to maintain room temperatures that are comfortable for all conference attendees. Be aware that room temperatures will vary throughout the conference center. A light sweater or jacket is helpful when room temperatures become too cool. Participants are asked to turn off cell phones and beepers when attending workshops, or to change them to a silent signal if necessary. Please step outside of the room when responding to a page or call.

Conference Planning Committee:

Betsy Benson, Nisonger Center (OSU), Lisa Christie (NADD), Terry Clark (ODDC), Rob Fletcher (NADD), Julie Gentile (WSU), Janice Mader (RSC), Lara Palay (DODD), Drew Palmiter (ODASAS), Steve Ruedrich, MetroHealth Ctr., Michael Schroeder (ODMH)

KEYNOTE ADDRESS PRESENTERS



Lauren Charlot, PhD, is an Assistant Professor of Psychiatry at the University of Massachusetts Medical School in Worcester, MA and serves as the Director of the UMass Multidisciplinary ID/MH Consultation Team. Dr. Charlot has published original research pieces on the subject of mood disorders in individuals with ID and has lectured widely on

a variety of topics, including behavioral health needs of individuals with Autism Spectrum Disorders. She is currently a co-investigator on an NIH-sponsored investigation regarding depression in children with ID and is initiating a pilot study of adverse drug events in persons with dual diagnosis (ID/MH). She is the lead author on the mood disorders chapter in the APA and NADD co-sponsored *DSM-IV-TR* diagnostic companion guide for people with ID. Dr. Charlot also serves on the advisory board of NADD.



Marc J. Tassé, PhD, FAAIDD, is the director of the Nisonger Center – UCEDD and a Professor of the Psychology & Psychiatry Department at the Ohio State University. Dr. Tassé received his PhD in Clinical Psychology from the Université du Québec à Montréal. He has over 20 years experience in conducting research and

providing clinical services primarily in the area of intellectual and developmental disabilities. He has over 75 peer-reviewed journal articles, book chapters, and books in the area of intellectual and developmental disabilities.



EDUCATIONAL OBJECTIVES

Upon Completion of the program participants will be able to:

- Describe the structure and utility of the Supports Intensity Scale.
- Describe the impact of co-occurring problem behaviors and psychiatric disorders on a person's intensity and profile of support needs.
- Explain the role played by co-occurring psychiatric disorders, severe problem behaviors, and Autism Spectrum Disorders on a person's support needs.
- Summarize the impact of a person's measurement intensity of support needs on the costs of service delivery.
- Describe the impact of the Americans with Disabilities Act, the Developmental Disabilities & Bill of Rights Act of 2000, and the Rehabilitation Act on healthcare and other services.
- Define specific topics/subjects that individuals with challenges believe they need to learn in order to be happy, healthy, safe, and contributing members of our society.
- Describe atypical features of mood disorders in people with ID and discuss the evidence suggesting that agitated behaviors should not be used as symptom substitutes for *DSM-IV-TR* diagnostic criteria.
- List several possible behavioral manifestations for *DSM-IV-TR* diagnostic criteria for major depressive disorder that may be displayed by an individual with limited expressive language skills.
- Explain how you work with people to allow them a voice.
- Describe similarities and differences in repetitive behaviors of ASD and the usual compulsions reported by patients without ASDs.
- Problem solve with the presenters in how to best obtain assistance/funding/guidance in acquiring appropriate adult education and lifelong learning.
- Describe the elements of the OPPDSN.
- Identify the necessary elements of successful teams and/or system collaborations ("guiding principles") for serving people with dual diagnosis.
- Define the efficacy of the BFJ model.
- Implement practices when working with victims of domestic violence who are dually diagnosed with ID/DD and PTSD.
- Illustrate the START Model and the components from referral to treatment discharge.
- Describe the use of best practices and evidence-based medicine regarding pharmacological treatment of grief and loss issues in the patient with ID.
- Create a positive technique that can be implemented to replace an atypical behavior.
- List reasons positive interventions have a greater chance of success with individuals within the spectrum of autism.
- Identify sources of epidemiological information regarding psychiatric illness in persons with ID.
- Relate how improved diagnostic accuracy can translate into improved treatment outcomes.
- Identify how phenotypic characteristics of Down syndrome relate to their mental health.

CONTINUING EDUCATION CREDIT

RN/LPN, Social Work, Counselor, Psychology, MD/DO

Northeastern Ohio Universities Colleges of Medicine and Pharmacy designates this educational activity for a maximum of 11.25 *AMA PRA Category 1 Credit(s)*[™]. Physicians should only claim credit commensurate with the extent of their participation in the activity.

The Ohio Department of Mental Health (ODMH) has been approved as an Authorized Provider by the International Association for Continuing Education and Training (IACET), 1760 Old Meadow Road, Suite 500, McLean, VA 22102. As an IACET Authorized Provider, ODMH offers CEUs for its programs that qualify under IACET guidelines. ODMH is authorized by IACET to offer 0.6 CEUs for Day 1 and 0.5 CEUs for Day 2 of this program.

The Ohio Department of Mental Health is approved by the Ohio Psychological Association – MCE Program to offer continuing education for psychologists. The Ohio Department of Mental Health #311334820 maintains responsibility for this program.

ODMH is an approved provider of continuing education for the indicated professional disciplines and awards the following credits:

RN/LPN	OBN 003 92-1424CO	6.25 CE contact hrs. DAY 1
	OBN 003 92-1425CO	4.75 CE contact hrs. DAY 2
SOCIAL WORK	RSX 088902-1596CO	6.25 CPEs Day 1
	RSX 088902-1597CO	4.75 CPEs Day 2
COUNSELOR	RCX 068915-1583CO	6.25 CPEs Day 1
	RCX 068915-1584CO	4.75 CPEs Day 2
*PSYCHOLOGY	311334820-835CO	6.25 MCEs Day 1
	311334820-836CO	4.75 MCEs Day 2

ALL ATTENDEES MUST list either their social security number or license number on the Training Report form. *Psychologists MUST list their license number on the Training Report form.

Continuing Professional Development Hours

This program has been approved by the Ohio Department of Mental Retardation and Developmental Disabilities for continuing credits for a total of 6 hours for Day 1 for the entire day, and a total of 4 hours for Day 2 for the entire day, in the following areas:

Adult Services; Day Habilitation; Early Intervention; Investigative Agent; County Board Members and Supt/Asst Supt (Services/Programs/Supports Streams).

NOTE: You must attend the entire day in order to receive credits/contact hours.

HOTEL INFORMATION

DoubleTree Hotel, 175 Hutchinson Avenue, Columbus/Worthington, OH –
September 28 & 29, 2010

Hotel Rates \$109.00* Single/Double Occupancy per night

We encourage you to make reservations as soon as possible as there is a small room block set-up for these evenings. The special group rate for hotel reservations will be available until 9/06/2010. Book now! Once the room block is full and/or the cut-off date has passed, reservations will be taken on a space and rate available basis.

**For Reservations Call: Direct 614-885-3334 or
1-800-222-8733 / mention: NADD**

*Prices are subject to state and local taxes. All reservations requests must be guaranteed for arrival by a first night's deposit or major credit card. Any reservations requiring cancellation must be cancelled before 4pm on the day of arrival to avoid a penalty charge of one-night room and tax rate.

Check-In 3:00 p.m. / Check-Out 12:00 p.m.

Guests are responsible for incidental charges and will be asked upon check in for either a credit or debit card to guarantee phone and movie privileges. Please note that there is a late check out fee after 3 p.m.

MORE HOTEL INFORMATION:

- 20 minutes to/from Port Columbus International Airport
- Across from Crossroads dining, retail and entertainment complex
- Sweet Dreams® Bedding • Complimentary Wireless High-Speed Internet Access in all guest rooms • Cedar Crest Restaurant and Lounge • 24-Hour Fitness Center
- Indoor Pool and Whirlpool Spa • Complimentary Self-Parking • Smoke-free environment • visit: www.columbuswothington.doubletree.com

NADD DM-ID:

The DM-ID Diagnostic Manual-Intellectual Disability: A Textbook of Diagnosis of Mental Disorders in Persons with Intellectual Disability and the DM-ID Diagnostic Manual-Intellectual Disability: A Clinical Guide of Diagnosis of Mental Disorders in Persons with Intellectual Disability are now available. The Manuals were developed by NADD in association with the APA. They are designed to facilitate an accurate DSM-IV-TR diagnosis in persons who have intellectual disabilities and to provide a thorough discussion of the issues involved in reaching an accurate diagnosis. On-Sale for a limited time only.



For more information visit www.DMID.org

ABOUT NADD

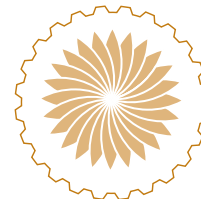
NADD, an association for persons with developmental disabilities and mental health needs, is a not-for-profit membership association established for professionals, care providers, and families to promote understanding of and services for individuals who have developmental disabilities and mental health needs. The mission of NADD is to advance mental wellness for persons with developmental disabilities through the promotion of excellence in mental health care.

NADD is recognized as the world's leading organization in providing educational services, training materials, and conferences.

NADD publishes two journals in addition to having an extensive array of resources including books, audiotapes, DVDs and other related educational and training materials. Additionally, NADD sponsors regional, annual and international conferences, teleconferences as well as provides consultation services.

For more information on NADD visit www.thenadd.org

September 28 & 29, 2010
Treatment & Support



Aspects:
Health
Mental

Ohio State 8th Annual MH/MR Conference

Return Service Requested

www.thenadd.org

or visit us on the web at:
E-mail: info@thenadd.org

Fax (845) 331-4569

Phone (845) 331-4336 • (800) 331-5362

132 Fair St., Kingston, NY 12401-4802

An association for persons with
developmental disabilities and
mental health needs.



Nonprofit
U.S. Postage
PAID
Kingston, NY
Permit No. 96